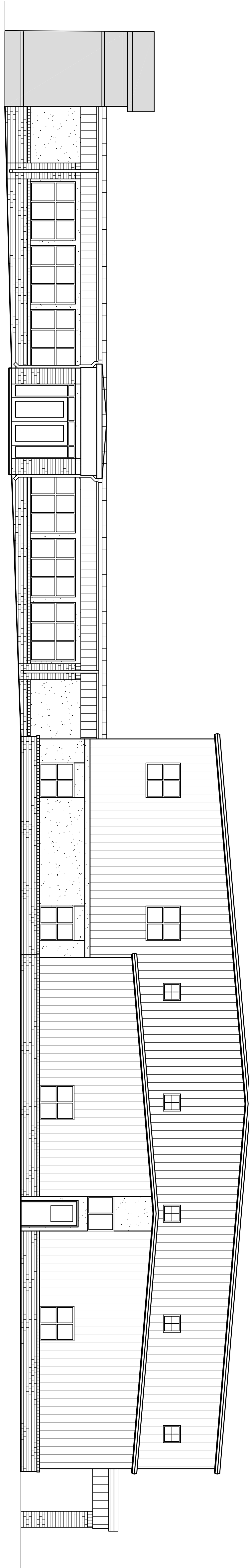


FRONT ELEVATION
SCALE: 1/8" = 1'-0"
1
A2-1



RIGHT SIDE ELEVATION
SCALE: 1/8" = 1'-0"
3
A2-1



REAR ELEVATION
SCALE: 1/8" = 1'-0"
2
A2-1

PLEASANT VALLEY SOUTH BAPTIST CHURCH

702 PLEASANT VALLEY ROAD
SILVER CREEK, GEORGIA 30173

Rardin & Carroll
Architects

CHURCH ARCHITECTURE - PLANNING - INTERIOR DESIGN
6105 PRESERVATION DRIVE - SUITE A - CHATTANOOGA, TN. 37416
PHONE: (423) 894-3242 FAX: (423) 894-2839 E-MAIL: postmaster@churchdesigners.com

REVISIONS

DATE BY

ALL DRAWING AND WRITTEN MATERIAL CONSTITUTES ORIGINAL WORK BY THE ARCHITECT.
IT IS UNLAWFUL TO REPRODUCE, COPY, OR DISCLOSE WITHOUT THE WRITTEN
CONSENT OF THE ARCHITECT. © COPYRIGHT 2006 RARDIN & CARROLL ARCHITECTS

PROJECT NUMBER
0723

SHEET NUMBER
A2-1

DATE
03-28-08